

Virginia Woolf: for a Poetics and Politics of Intimacy



© Zou

11-12 May 2023

Campus Manufacture, Bâtiment des Forges
11 Rue Dr Rémy Annino, 42000 Saint Etienne
(Building L, Amphithéâtre L219)

Organisatrices :
floriane.revion.piegay@univ-st-etienne.fr
annemarie.dibiasio@gmail.com

International Conference
organised by ECLLA

Jean Monnet University
Saint-Etienne, France

With the support of the SEW
CORPUS (UR-UPJV 4295) and the
AAP



UNIVERSITÉ
JEAN MONNET
SAINT-ÉTIENNE



ECLLA
Études du Contemporain
en Littératures, Langues, Arts
Unité de Recherche
UNIVERSITÉ JEAN MONNET SAINT-ÉTIENNE



General Map of the “Campus Manufacture” Université Jean Monnet, St Etienne

The conference will take place in Building L
Bâtiment des Forges
11 Rue Dr Rémy Annino, 42000 Saint-Étienne

Contacts

Floriane Reviron-Piégay

floriane.reviron.piegay@univ-st-etienne.fr

+33 6 71 37 18 62

Anne-Marie Smith-Di Biasio

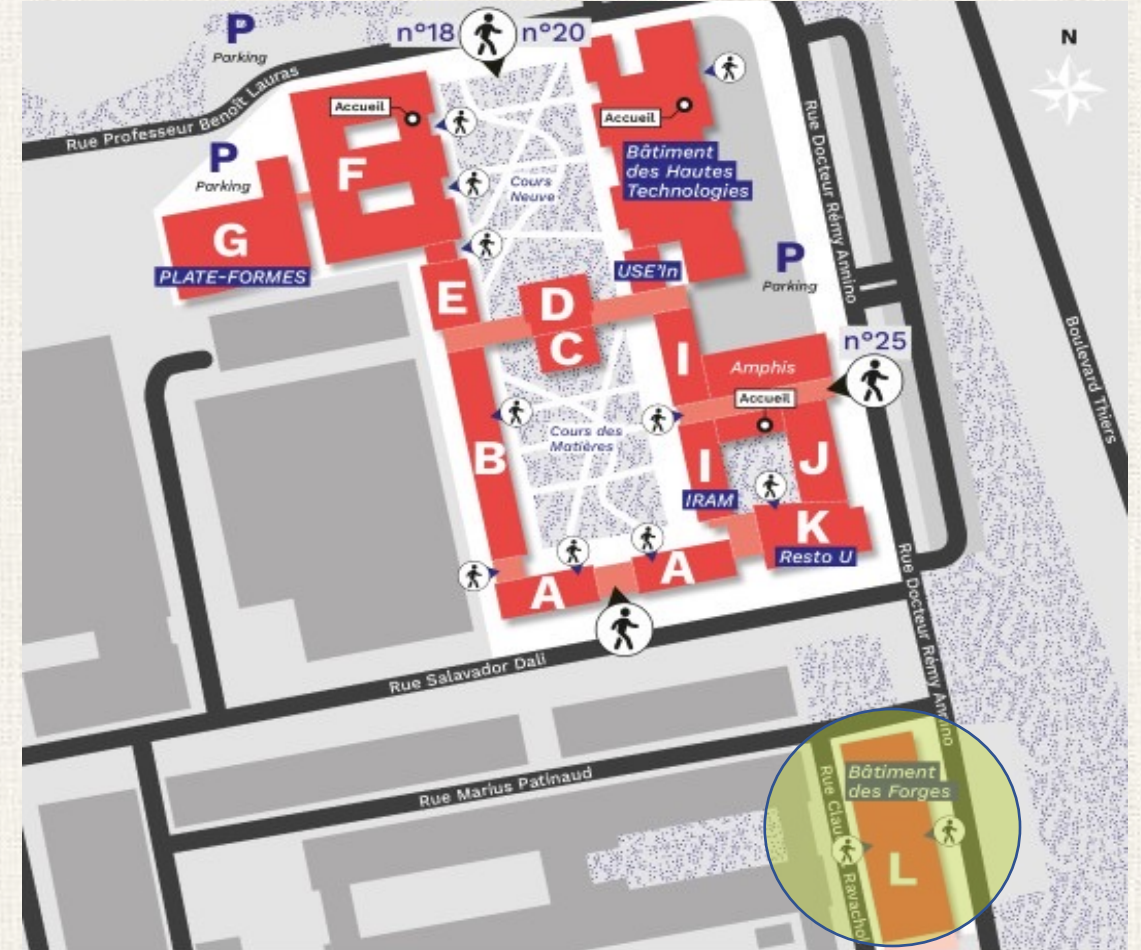
annemarie.dibiasio@gmail.com

+33 6 78 58 95 69

ECLLA Secretary:

Nadine Lévèque-Lair

nadine.lair@univ-st-etienne.fr



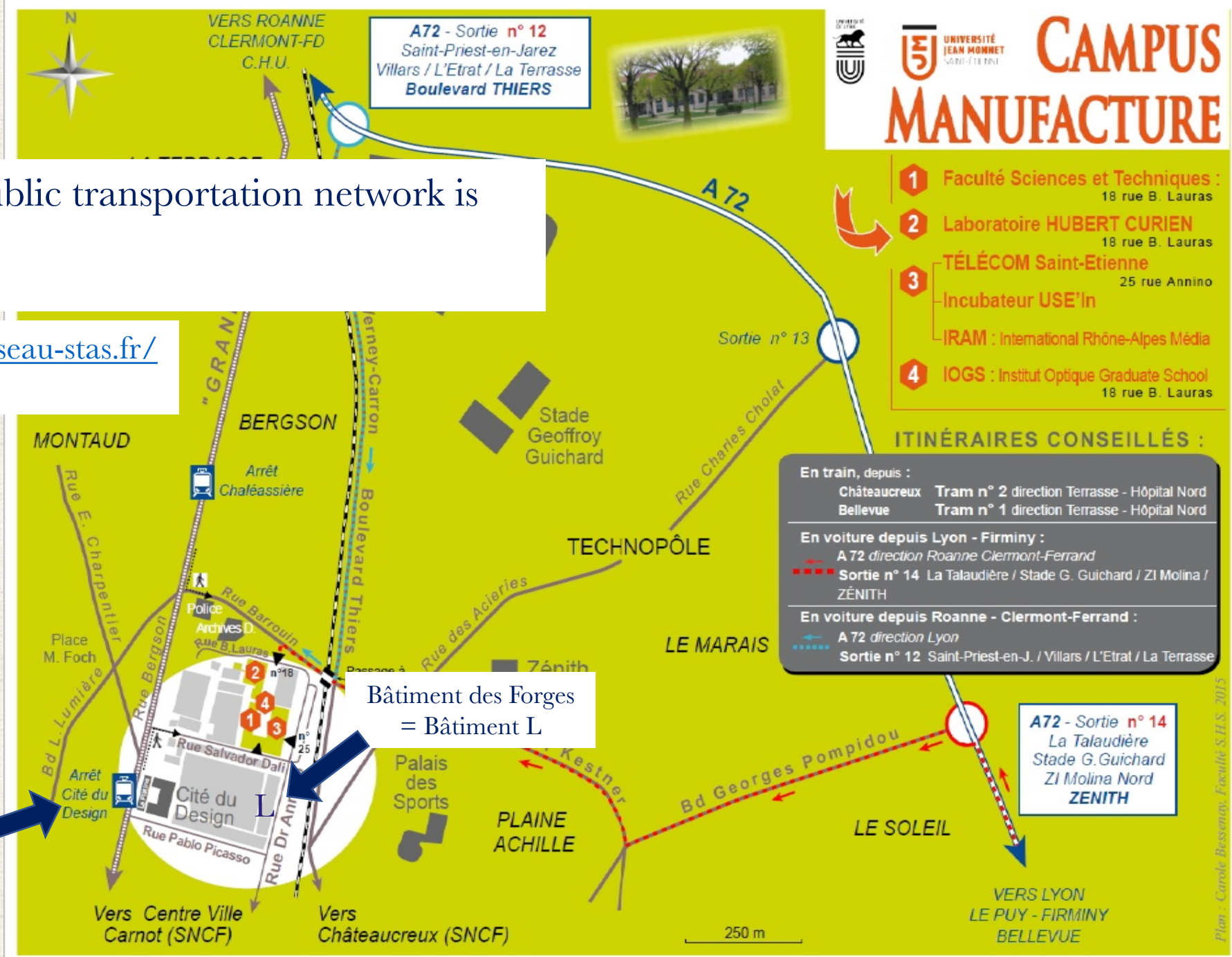
CAMPUS MANUFACTURE

- | | | | |
|-----------|---|----------|--|
| A | Télécom S'-Étienne
• Administration Niv. 1 | I | Télécom S'-Étienne
• Administration
IRAM (RdC) |
| B | Fac. Sciences et
Techniques
• Foyer étudiants
• Scolarité Niv. 1 | J | Télécom S'-Étienne
• Amphi J020-21-22
• Scolarité
• Foyer étudiants
• Bibliothèque |
| CD | Institut Optique
Graduate School | K | Resto'U |
| EF | Lab. Hubert Curien | L | Bâtiment des Forges |
| G | PLATE-FORMES | | |



St Etienne public transportation network is the STAS

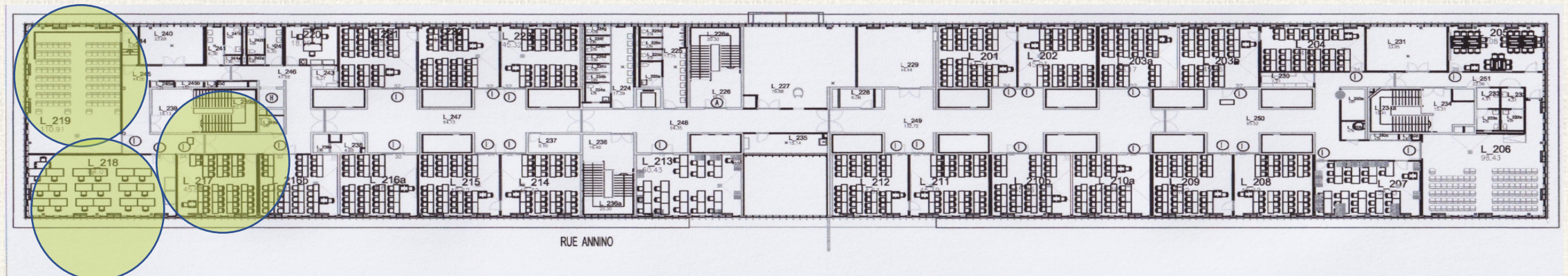
<https://www.reseau-stas.fr/>





Bâtiment des Forges: map of the 2nd floor

The conference will take place mainly in amphitheatre L 219 and in rooms L 217 & L 218



List of hotels: For a comfortable but affordable room of your own...

Ibis Budget St Etienne Centre Gare Chateaucieux
<https://all.accor.com/hotel/B2Q6/index.fr.shtml>

Hotel Furania
<http://www.hotelfurania.com/>

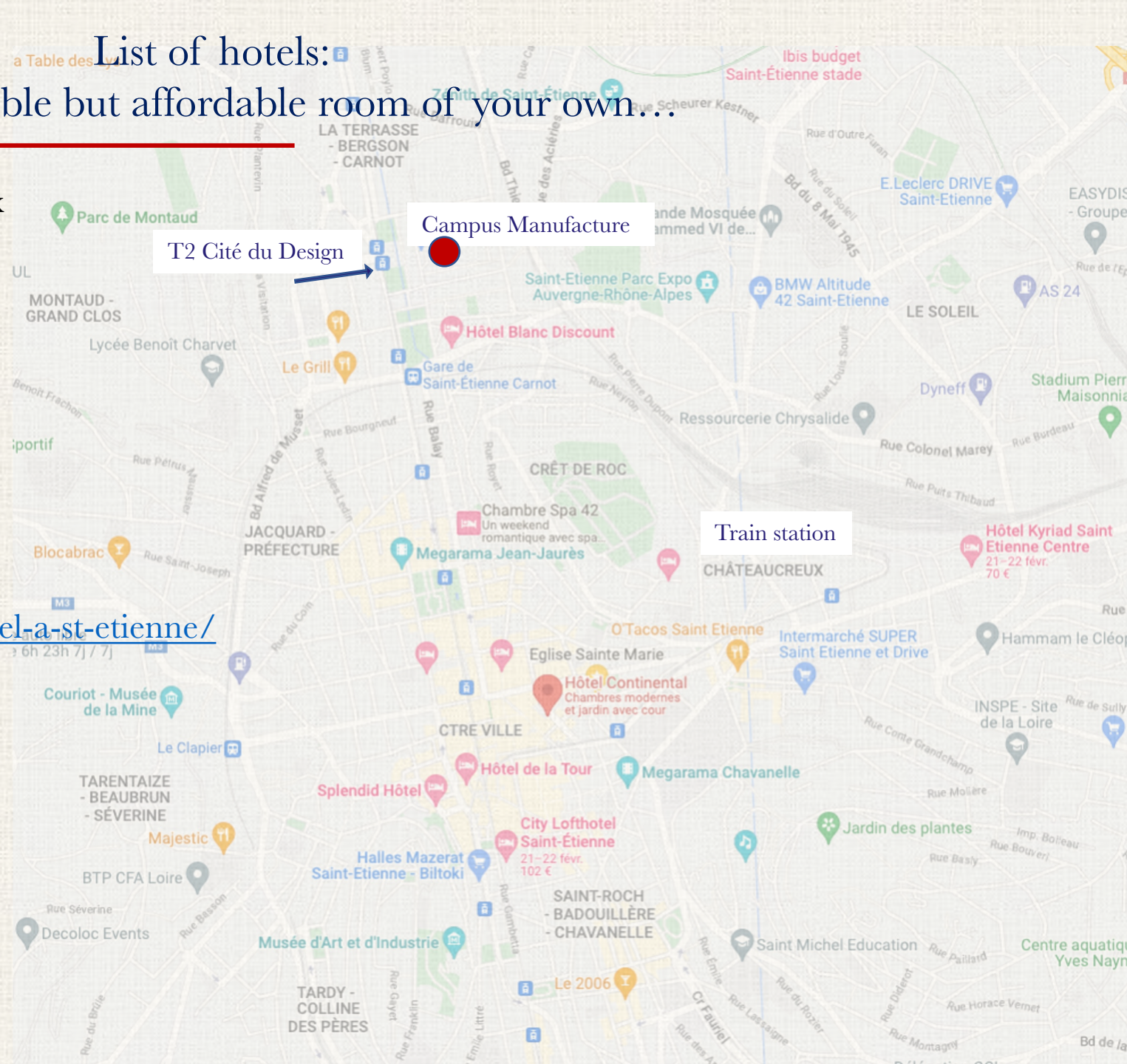
Hôtel du cheval noir
<https://hotel-chevalnoir.fr/>

Résidhotel St Etienne Centre
<https://www.residhotel.com/residence/apparthotel-a-st-etienne/>

Hotel Continental
<https://www.hotelcontinental42.fr/fr/>

Ibis Style St Etienne Chateaucieux
<https://all.accor.com/hotel/1115/index.fr.shtml>

CityLoft Hotel St Etienne
<https://www.cityloftsaintetienne.com/>



For those of you coming from abroad

Either:

Flight to St Exupéry Airport, Lyon.

then Rhône Express Shuttle to Lyon Part Dieu railway station: (a 30-minute ride) <https://www.rhonexpress.fr/>

Or:

Flight to Paris Charles de Gaulle Airport

Then direct connexion to railway station at the airport and TGV to Lyon Part Dieu (2-hour train journey)

<https://www.parisaeroport.fr/en/passengers/access/paris-charles-de-gaulle/train>

The best way to find a cheap train ticket from Paris Charles de Gaulle Airport to Gare de Lyon-Part-Dieu is to book your journey as far in advance as possible and to avoid traveling in the rush hour.

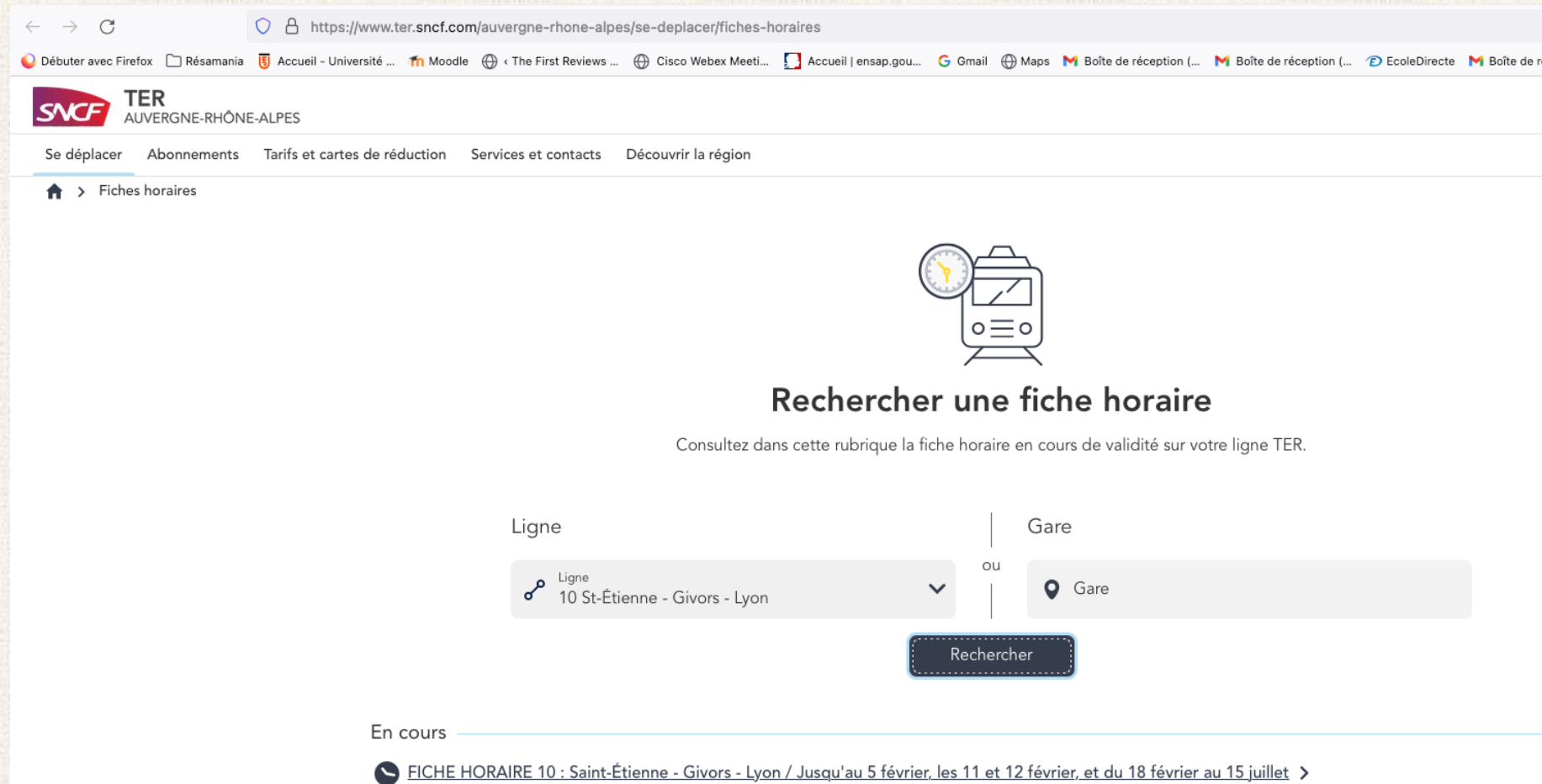
The average ticket from Paris Charles de Gaulle Airport to Gare de Lyon-Part-Dieu will cost around € 68 if you buy it on the day, but the cheapest tickets can be found for only € 52.

Look at the website “snCF connect” to book your train tickets:

<https://www.sncf-connect.com/>

When in Lyon, train to St Etienne Châteaureux from Part Dieu railway station, one train every 30 minutes, a 50-minute journey.

(on the SNCF TER Rhône Alpes website look for line 10 St Etienne-Givors-Lyon, train schedule attached to my e-mail)



The screenshot shows the website <https://www.ter.sncf.com/auvergne-rhone-alpes/se-deplacer/fiches-horaires>. The page features the SNCF TER logo and a navigation menu with options like 'Se déplacer', 'Abonnements', 'Tarifs et cartes de réduction', 'Services et contacts', and 'Découvrir la région'. The main heading is 'Fiches horaires', accompanied by a train and clock icon. Below this is the section 'Rechercher une fiche horaire' with the instruction: 'Consultez dans cette rubrique la fiche horaire en cours de validité sur votre ligne TER.' The search form includes a 'Ligne' dropdown menu set to '10 St-Étienne - Givors - Lyon' and a 'Gare' dropdown menu set to 'Gare'. A 'Rechercher' button is positioned below the form. At the bottom, there is a section 'En cours' with a link: 'FICHE HORAIRE 10 : Saint-Étienne - Givors - Lyon / Jusqu'au 5 février, les 11 et 12 février, et du 18 février au 15 juillet >'. The browser's address bar and various extension icons are visible at the top.

Looking forward to seeing you soon in St Etienne!
